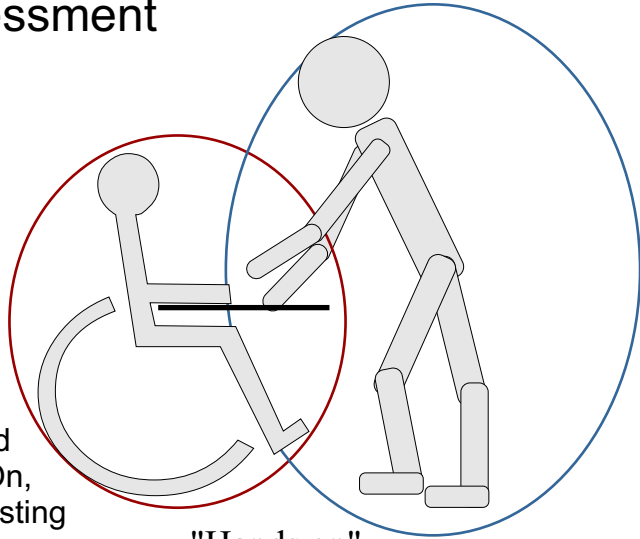


Adaptive Access

A FRAMEWORK FOR TRAINING

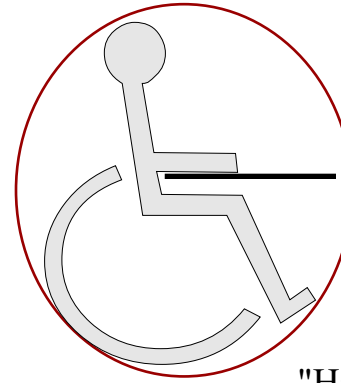
Assessment

Initial
Assessment
and setup of
access method
Hands On,
Trials and testing

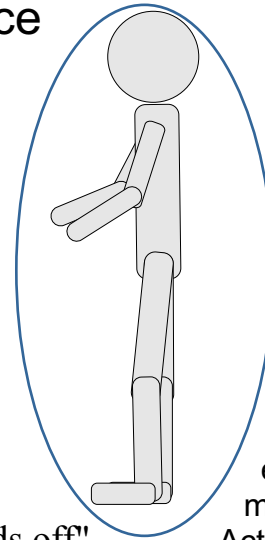


"Hands on"

Physical Independence & Practice



"Hands off"



HANDS OFF -
MOVE AWAY

Move out of arms reach - Physical control / activation is independent and as efficient as possible. Development of self esteem, autonomy and motivation
Activities - with interpersonal interaction / communication and independent activities

Participation / interaction / learning



Academics / Learning



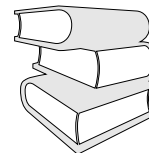
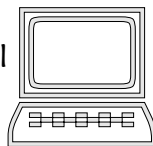
Communication / Interaction
Socialization / Motivational activities



Recreation / Fun / Play



Environmental control



Once physical independence in control is achieved, the third stage focuses on accuracy of activation for choice making, appropriate communication, correct selections during learning activities.

